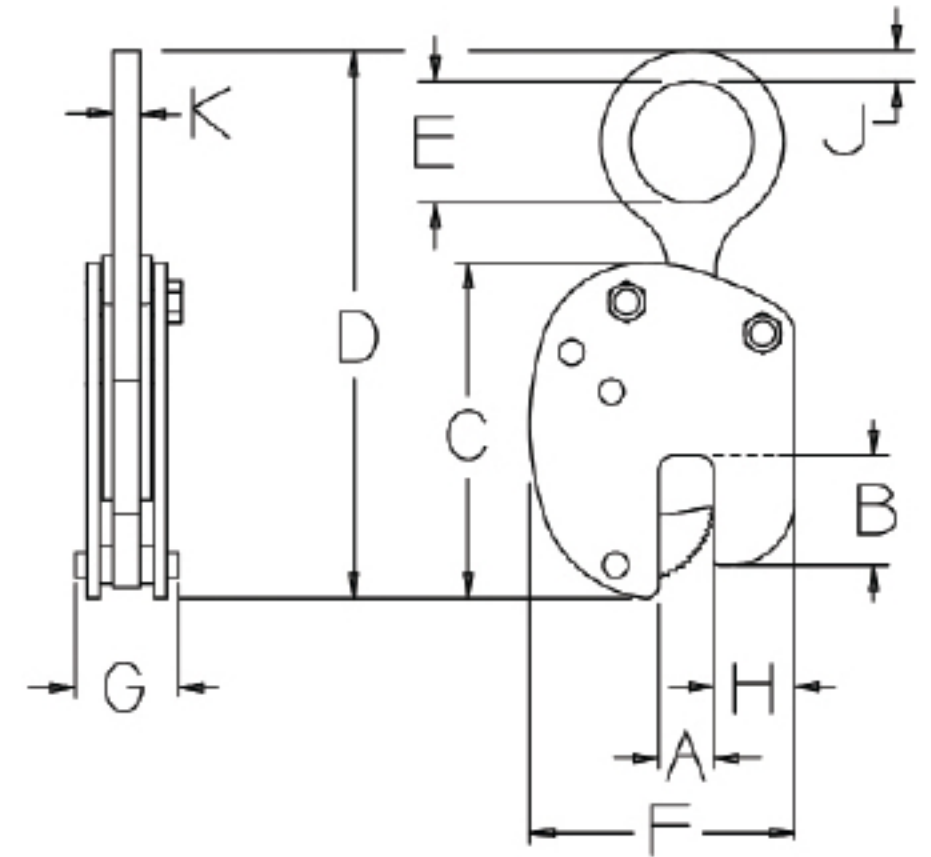


MODEL VSL DIMENSIONS



	1/2 Ton	1 Ton	2 Tons	3 Tons	4 & 6 Tons
PRT #	VSL-0.5-A	VSL-1.0-A	VSL-2.0-A	VSL-3.0-A	VSL-4.0-A VSL-6.0-A
A	0 - 7/8"	0 - 7/8"	0 - 1"	0 - 1"	0 - 2 1/8"
B	2 1/4"	2 1/4"	2 1/2"	4"	5 3/8"
C	5 3/4"	5 3/4"	6 3/4"	9"	11 1/2"
D MAX	8 5/8"	8 5/8"	11 3/8"	15 1/4"	19"
E	1 1/2"	1 1/2"	2 1/4"	3"	3 1/2"
F	5 3/16"	5 3/16"	5 5/8"	7"	9 7/8"
G	2 1/2"	2 1/2"	2 5/8"	3 3/16"	4 1/4"
H	1 3/8"	1 3/8"	1 3/4"	2"	2 3/4"
J	1/2"	1/2"	5/8"	3/4"	1"
K	1/2"	1/2"	1/2"	5/8"	3/4"
WT	4 lbs.	5 lbs.	10 lbs.	19 lbs.	42 lbs. 45 lbs.